



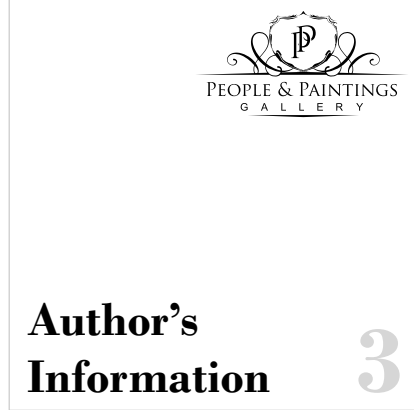
08 Aug 2022 – 19 Aug 2022

# **Glow in the Higher Realms**

Elena Chulkova



**Glow in the  
Higher Realms**



**Author's  
Information** 3



**Winter** 4



**Spring** 5



**Summer** 6



**Autumn** 7



**Self-portrait with a  
Painting** 8



**A Window in the  
Workshop in the  
Attic** 9



**Still life with a  
Dog Leash and  
Rudbeckias** 10



**Jonah in the Belly  
of the Whale** 11



**Joseph on the Way  
to Dothan** 12



**Still life with the  
Modern Style** 13



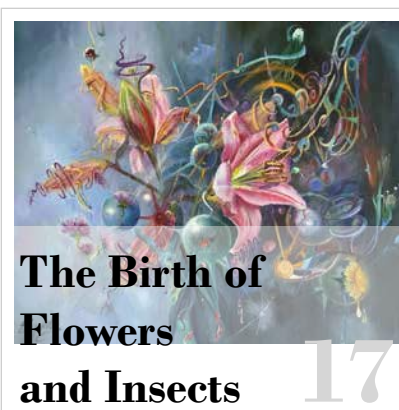
**The Birth of Flora  
(1)** 14



**The Birth of Flora  
(2)** 15



**The Birth  
of Lily** 16



**The Birth of  
Flowers  
and Insects** 17



**Lily's  
Transgression** 18



**The Process** 19



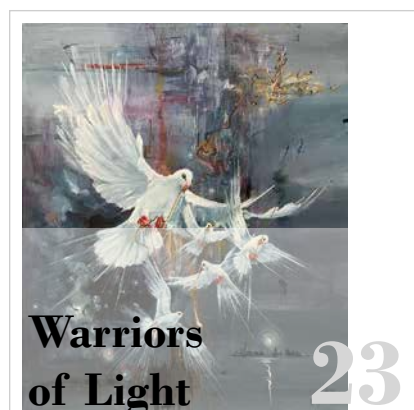
**Venice** 20



**Bee** 21



**Attack** 22



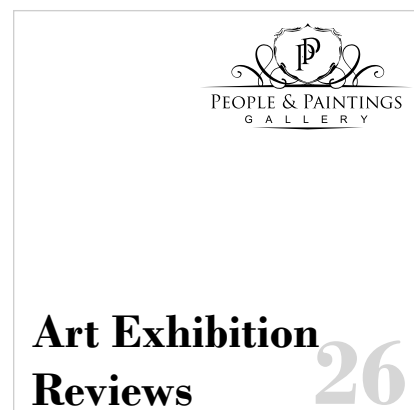
**Warriors  
of Light** 23



**Lavra** 24



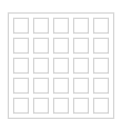
**Summer 2022** 25



**Art Exhibition  
Reviews** 26



Elena was born in Moscow into a family of well-known journalists who went to exhibitions and vernissages every week with friends, artists and art historians and took them with them from a very tender age, probably this influenced the choice of a future profession, although not immediately. After school, she entered the Moscow Technical University and only then, on the unexpected advice of familiar artists (although some did not advise her to study, believing that she had already developed her own style, and learning could damage her individuality), she entered the art and graphic faculty of the Moscow Pedagogical Institute. . At that time, it was the only university where it was possible to study drawing and fine arts, so higher education had already been received. In her third year, she became a member of the UNESCO City Graphics Committee and took part in exhibitions in Moscow and Siberia. At the same time, private galleries and halls began to appear, where it was possible not only to exhibit, but also to sell her works, her works were exhibited and sold in many galleries and auction houses in Moscow, acquired in private collections of America, Kazakhstan and Norway. At the moment, Elena is a member of the Professional Union of Artists, is an original professional artist with a recognizable style and an independent view of what is happening in Art and the world.

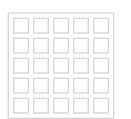


# Winter



Art No: PP1599  
Artwork Dimensions:  
w 70 cm (28 inches)  
h 50 cm (20 inches)  
Year Created: 2022  
Medium: Oil  
Surface: Canvas

Glow in the Higher Realms

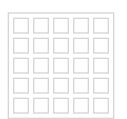


4

# Spring



Art No: PP1600  
Artwork Dimensions:  
w 70 cm (28 inches)  
h 50 cm (20 inches)  
Year Created: 2021  
Medium: Oil  
Surface: Canvas

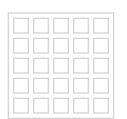


# Summer



Art No: PP1601  
Artwork Dimensions:  
w 50 cm (20 inches)  
h 70 cm (28 inches)  
Year Created: 2021  
Medium: Oil  
Surface: Canvas

Glow in the Higher Realms

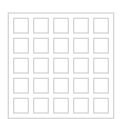


6

# Autumn



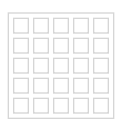
Art No: PP1602  
Artwork Dimensions:  
w 50 cm (20 inches)  
h 60 cm (24 inches)  
Year Created: 2021  
Medium: Oil  
Surface: Canvas



## Self-portrait with a Painting



Art No: PP1604  
Artwork Dimensions:  
w 46 cm (18.4 inches)  
h 55 cm (22 inches)  
Year Created: 1994  
Medium: Oil  
Surface: Canvas





## A Window in the Workshop in the Attic



Art No: PP1605  
Artwork Dimensions:  
w 100 cm (40 inches)  
h 80 cm (32 inches)  
Year Created: 2001  
Medium: Oil  
Surface: Canvas

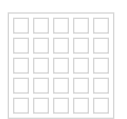
Many of the paintings were painted by me in the attic of a small country house. The metropolis in which I live is life and reflection, and a country house is freedom. I couldn't help but pay tribute to my workshop, but this is still the beginning of both the search for the manner of the image and imitation. At that time I was very fond of Joan Miro)

## Still life with a Dog Leash and Rudbeckias



Art No: PP1606  
Artwork Dimensions:  
w 40 cm (16 inches)  
h 60 cm (24 inches)  
Year Created: 2013  
Medium: Oil  
Surface: Canvas

Glow in the Higher Realms



10

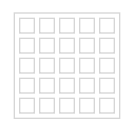
It was amazing to me how you can create a good picture using the simplest objects: an old vase, a car mirror, a dog leash, and ordinary wildflowers!

# Jonah in the Belly of the Whale



Art No: PP1608  
Artwork Dimensions:  
w 90 cm (36 inches)  
h 60 cm (24 inches)  
Year Created: 2012  
Medium: Oil  
Surface: Canvas

Glow in the Higher Realms



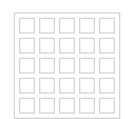
A picture from the "Old Testament" series. For me, there is nothing more beautiful, aesthetic and noble than religion. At the same time, the religion that is peculiar to this people. The parables of the Old Testament give an extraordinary impetus to creativity, and the whole world culture is an example of this.

## Joseph on the Way to Dothan



Art No: PP1609  
Artwork Dimensions:  
w 100 cm (40 inches)  
h 70 cm (28 inches)  
Year Created: 2003  
Medium: Oil  
Surface: Canvas

Glow in the Higher Realms



12

The Old Testament series. A little illustrative work to the beautiful story of Joseph the Beautiful. The story is so beautiful and extraordinary that I couldn't resist)

## Still life with the Modern Style



Art No: PP1610  
Artwork Dimensions:  
w 47 cm (18.8 inches)  
h 60 cm (24 inches)  
Year Created: 2020  
Medium: Oil  
Surface: Canvas

The series "Pandemic and Lilies". Pandemic. This year was a precursor to the terrible year 2022, but it made it possible to observe the world around us more closely, peering into the little things we passed by, inhaling the fragrance of flowers for only a second and perceiving the beauty of nature as ordinary. The only lily bush, which almost accidentally grew up near the house, suddenly struck me with its extraordinary harmony and color. I didn't pick a flower, I just took a picture and came up with a decent vase for the lily)

Glow in the Higher Realms



# The Birth of Flora (1)



Art No: PP1611  
Artwork Dimensions:  
w 50 cm (20 inches)  
h 60 cm (24 inches)  
Year Created: 2020  
Medium: Oil  
Surface: Canvas

Glow in the Higher Realms



The series "Pandemic and Lilies". The lily was so beautiful that I wanted it to resound in the higher spheres. So four works were created in which I investigated the theological question of creation)). Is it the result of the metamorphoses of nature or did God decorate the flower with love for people, pouring out all sorts of shades of pink on it and filling it with His breath.

## The Birth of Flora (2)



Art No: PP1612  
Artwork Dimensions:  
w 50 cm (20 inches)  
h 60 cm (24 inches)  
Year Created: 2020  
Medium: Oil  
Surface: Canvas

Glow in the Higher Realms

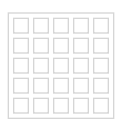


# The Birth of Lily



Art No: PP1613  
Artwork Dimensions:  
w 60 cm (24 inches)  
h 50 cm (20 inches)  
Year Created: 2020  
Medium: Oil  
Surface: Canvas

Glow in the Higher Realms



16

The series "Pandemic and lilies", Another variation of the creation of a flower, inspired by a quote from the Bible: "And the Spirit was carried over the waters .."



## The Birth of Flowers and Insects



Art No: PP1617  
Artwork Dimensions:  
w 60 cm (24 inches)  
h 50 cm (20 inches)  
Year Created: 2020  
Medium: Pastels  
Surface: Sandpaper

Glow in the Higher Realms



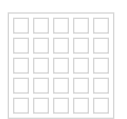
The series "Pandemic and Lilies". In continuation of my dubious artistic fantasy about creating our beautiful and amazing world)

# Lily 's Transgression



Art No: PP1618  
Artwork Dimensions:  
w 50 cm (20 inches)  
h 70 cm (28 inches)  
Year Created: 2021  
Medium: Pastels  
Surface: Sandpaper

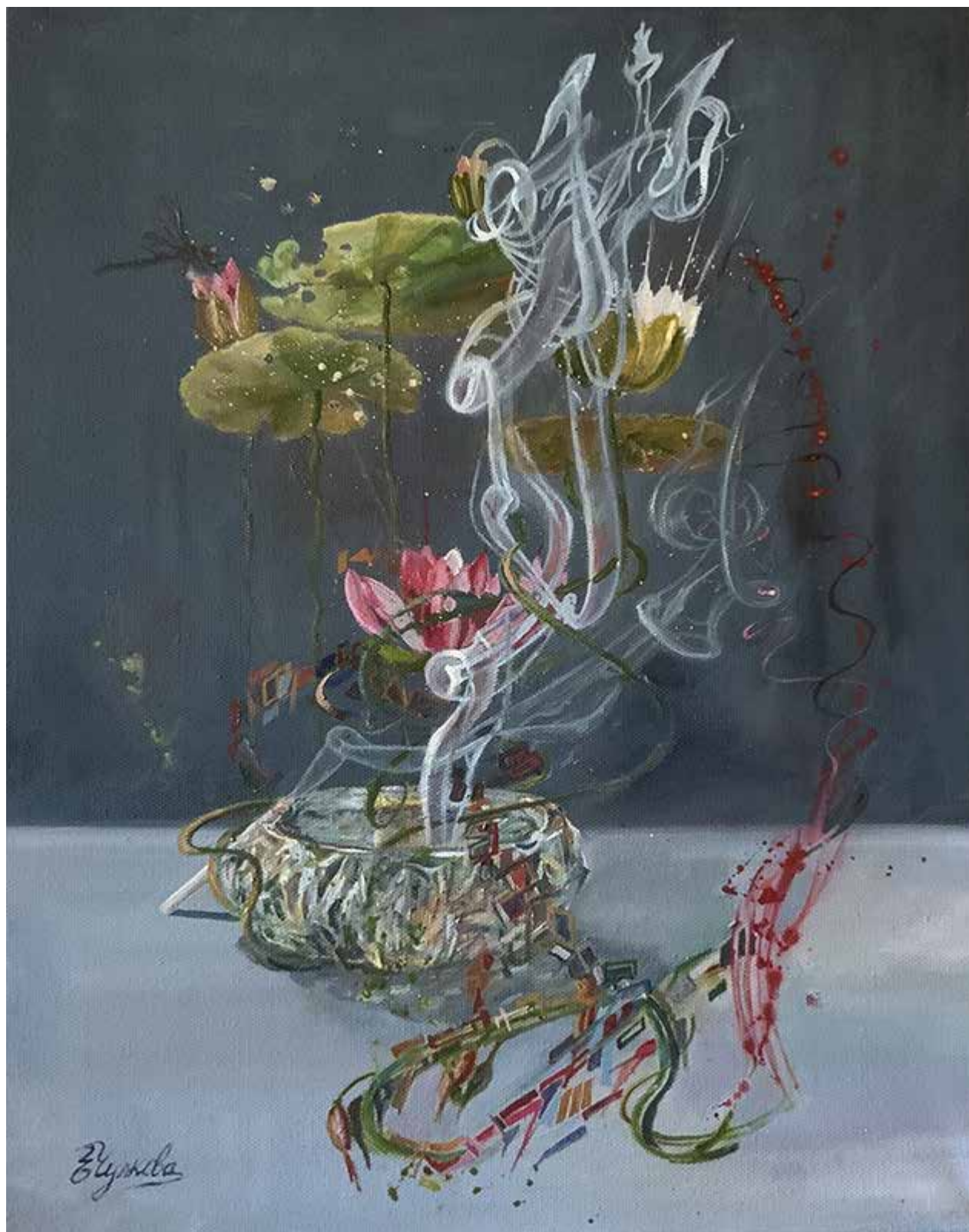
Glow in the Higher Realms



18

The series "Pandemic and Lilies". The next year my lily didn't come up, maybe she gave me too much energy.) . Feeling gratitude and a little guilt, I couldn't help but pay my last tribute to the flower))

## The Process



Art No: PP1620  
Artwork Dimensions:  
w 40 cm (16 inches)  
h 50 cm (20 inches)  
Year Created: 2021  
Medium: Oil  
Surface: Canvas

Glow in the Higher Realms



19

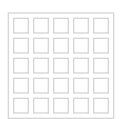
The "Process" series. I wanted to get in touch with the viewer, to show how the picture is born, with all the attributes and inner concentration

# Venice



Art No: PP1621  
Artwork Dimensions:  
w 50 cm (20 inches)  
h 60 cm (24 inches)  
Year Created: 2021  
Medium: Oil  
Surface: Canvas

Glow in the Higher Realms



20

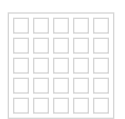
At the end of 2021, it became almost impossible for me to depict people, flowers, houses, as if there was some kind of premonition of tragedy and alienation from the whole world. Venice is beautiful, but chaos is already coming.

# Bee



Art No: PP1622  
Artwork Dimensions:  
w 50 cm (20 inches)  
h 70 cm (28 inches)  
Year Created: 2021  
Medium: Oil  
Surface: Canvas

Glow in the Higher Realms



Abstraction is not chaos. It allows the artist to be free and understand a lot about himself and the world around him. I used to have nothing against insects, even stinging ones, and I loved bees. Now everything has changed

# Attack



Art No: PP1739  
Artwork Dimensions:  
w 50 cm (20 inches)  
h 69 cm (27.6 inches)  
Year Created: 2022  
Medium: Oil  
Surface: Canvas

Glow in the Higher Realms

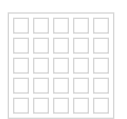


# Warriors of Light



Art No: PP1740  
Artwork Dimensions:  
w 50 cm (20 inches)  
h 60 cm (24 inches)  
Year Created: 2022  
Medium: Oil  
Surface: Canvas

Glow in the Higher Realms



23

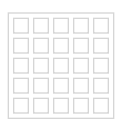
This is how I respond to the current moment

# Lavra



Art No: PP1741  
Artwork Dimensions:  
w 60 cm (24 inches)  
h 50 cm (20 inches)  
Year Created: 2022  
Medium: Oil  
Surface: Canvas

Glow in the Higher Realms



24

This is my prayer for Peace

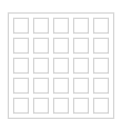


## Summer 2022



Art No: PP1762  
Artwork Dimensions:  
w 60 cm (24 inches)  
h 50 cm (20 inches)  
Year Created: 2022  
Medium: Oil  
Surface: Canvas

Glow in the Higher Realms



25

In the summer of 2022, the flowers are just as beautiful, the herbs are fragrant, I could not resist)

## Art Exhibition Reviews

### J. Alba

Is it possible to point out where an artist's real world and her power of imagination meet or separate? When it comes to Elena Chulkova's exhibit, we can see how seasons change as her paintings do the same – while other qualities remain constant: winter and autumn are on the sober side of things; summer and spring show an unconventional reflection of reality.

Following that line of thought, her self-portraits are colder, and as the artist moves further away from introspection and closer to distant scenery, her other paintings become warmer; better said, her self-reflection is grounded in reality, while her other work flies high in her imagination.

Is the artist putting imagination to the test or painting things the eyes can hardly see? When it comes to art, the answer isn't clear: the question itself will evoke different reactions, the same way these paintings will change depending on the people interpreting them.

### Shinozaki

People and Paintings Gallery offered a great solo exhibition of a renowned international artist, Elena Chulkova. This is a remarkable exhibition that peers at the different facets of our world through an ethereal, dreamlike lens.

Inspired from a young age by the galleries she and her family visited, Elena Chulkova took a shine to the world of art and painting, eventually deciding to make it her future career. She has turned out a truly unique and captivating set of artworks for this exhibition.

The hazy background of her paintings complements the striking subjects of her artworks. *Glow in the Higher Realms* features a diversity of painting types, such as the abstract chaos of 'Venice', the meandering landscape of 'Joseph on the Way to Dothan', as well as several pieces referencing biblical events, that properly capture their grandeur.

Elena Chulkova's work is pleasing to the eye, while also allowing you to ponder the little details she added to the paintings. This exhibition is made up of strong pieces that fit well with the theme.

